

**INMOTION PC UTILITIES  
for Stepper Motor Controller M1486**

Inmotion PC Utilities software is available for M1486 indexer and microstepping sequencer program generation, editing and validation. The software filters each command for proper format and parameter values. The software communicates directly with the stepper motor controller via the RS232 serial interface (COM1 or COM2 of a PC).

Inmotion provides integrated multiwindow development environment. It employs multiple overlapping and resizable windows. Windows have scroll bars, close boxes and zoom boxes. They can be controlled by using the mouse with pull down menus or by keyboard shortcuts.

In order to minimize keystrokes it employs the computers function keys for the main commands, such as file handling commands, DOS Shell and frequent motion commands. All dialog boxes that require the user to enter text keep a scrolling history list, so you can reuse previous entries. Furthermore, Inmotion provides integrated calculator, ASCII table, and directory browser.

**- Motion Calculator**

The motion calculator provides the possibility to calculate any motion parameter after remaining motion parameters specification. For example, the motion calculator gives total time of movement and times of individual parts of movement after start/stop velocity, maximum velocity, acceleration and distance specification.

**- Transmitted Command Memory**

The user can open a scrollable trace buffer window with last 100 commands sent to the controller from a computer via the RS232 serial port - "Trace Window" command. The contents of this window can be saved to a disk for repeated transmitting.

**- Help**

Inmotion has the context sensitive scrollable help available by pressing F1. The user can work with the help window as with any other window in Inmotion.

**- Menu**

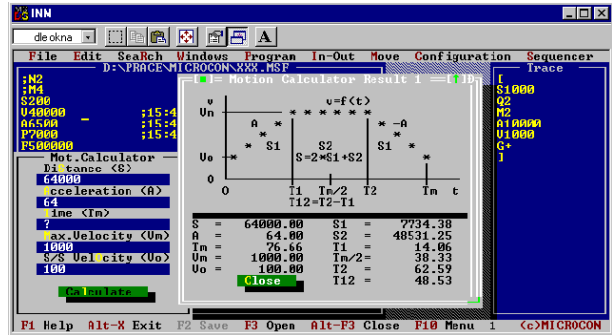
The upper menu line includes the additional menus. This one is available by pressing F10 or by mouse click anywhere on the upper menu line. The user can choose one of the following items:

**a) basic menu**

- File**
- Edit**
- Search**
- Windows**

**b) menu containing the controller M1486 commands**

- Program** (Small programmable logic controller commands)
- In-Out**
- Move** (Motion control commands)
- Configuration**
- Sequencer**



Inmotion PC Utilities enables programs to be created off-line on a PC and then downloaded to the controller as well as motion commands to be sent immediately after typing.

**- Inmotion PC Utilities compiled for Windows 95/98/2000**

Inmotion PC Utilities new version provides some better functions in comparison with previous versions:

- motor torque calculation from load inertia and acceleration parameters; acceleration can be calculated if total time and distance are specified
- dwells between commands transmitting for EEPROM write are computer speed independent
- controller type identification, motion program length testing according to the controller type
- memory of the last settings (controller type, baud rate, serial port used).